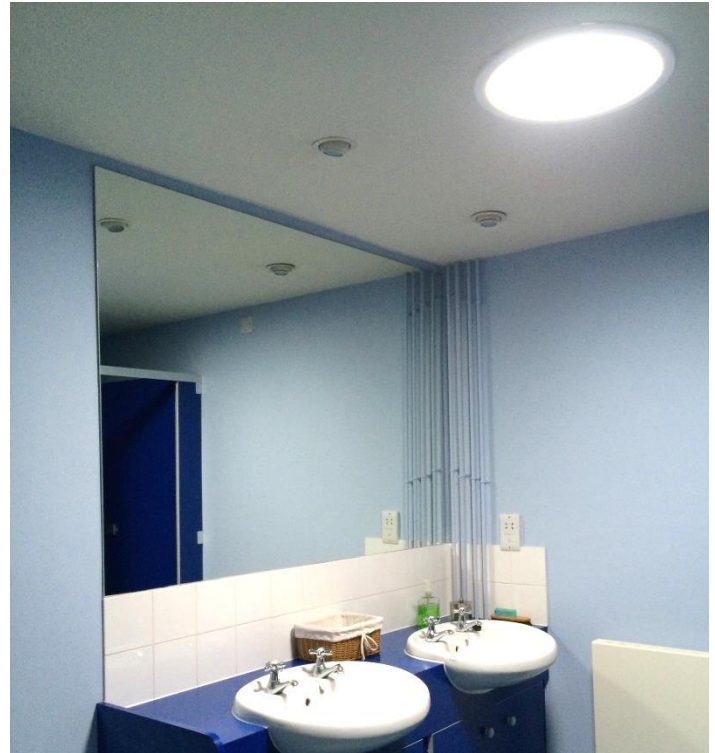


Office Chase Meadow



Chase Meadow is a signalling design company based near Stratford upon Avon. The company took over an existing office barn conversion that had very dark work spaces all along one side of the building owing to their distant location from any windows.

They required additional light in order to maximize the available space and layout, ideally a focused natural light to carry out their design process work.

Business Operations Manager, Sue Grant, had seen daylight tubes featured on a design programme some time ago and thought to contact Solalighting Limited. A total of 8 Solatube 290DS Daylighting Systems were installed in the meeting room, printing room, public and private offices, and toilets.

In addition to providing the solution for their lighting requirements, the installation of this product also ensured minimal disruption and impact on the present building – a beautiful barn of Victorian construction.

“The Solatube Daylighting Systems have been highly effective introducing high quality natural light in very dark areas, it is our intention to add some additional tubes next year to increase the natural light in other areas of the building.”

Sue Grant, Business Operations Manager
Chase Meadow Signalling



For more information on this application or to find out more about Solatube Daylighting Systems please contact us.

Specify with confidence Solatube Daylighting Systems hold BBA certification confirming their quality, compliance to UK Building Regulations and fitness-for-purpose

